

**DIGI PRO PREVENTER
MODEL - MCS_3P3CDP**



CUSTOMER CARE
+91 91596 34445



The **DIGI PRO PREVENTER** is a digital device designed to protect 3-phase motor from Dryrun amps, overload amps, phase failure, and phase reversal. It offers accurate monitoring and control of your motor performance, ensuring efficient operation and preventing damage. It is suitable for submersible pumps, and HVAC systems that utilize 3-phase motors.

SPECIFICATION:

MODEL	: MCS_3P3CDP
TYPE	: DIGITAL
BOX	: METAL BOX
COLOUR	: BLUE, WHITE
INPUT SINPLY	: 3-PHASE
OPERATING VOLTAGE	: 440 VAC
PACKAGE CONTAINS	: 1x DIGI PRO PREVENTER, 3x CT COIL 40A, 1x USER MANUAL.

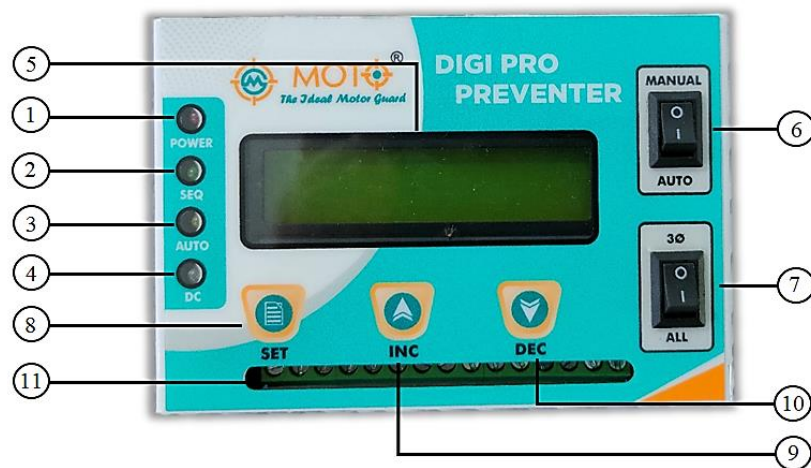
FEATURES:

- 16x2 LCD DISPLAY.
- SINGLE PHASE PREVENTER.
- HIGH & LOW VOLTAGE PROTECTION.
- PHASE FAILURE & PHASE REVERSAL PROTECTION.
- DIFFERENT VOLTAGE PROTECTION.
- OVER LOAD & DRY RUN PROTECTION.
- CURRENT SENSING PHASE -3(3CT).
- INDIVIDUAL AMPS SETTINGS.
- VOLTAGE & AMPS CALIBRATION OPTION.
- CYCLIC TIMER WITH RESUME OPTION.
- YIELD TIMER OPTION.
- AUTO START TIMER OPTION.
- STAR DELTA TIMER OPTION.
- WATER LEVEL CONTROLLER OPTION.
- ROTOR LOCK OPTION.
- PUMP ERROR & FLOAT FAULT OPTION.

ADVANTAGES:

- SUITABLE FOR ALL BUTTON STARTER
- DIGITAL VOLT & AMP METER
- ACCURACY WITH TRIPPING & DISPLAY FAULT STATUS
- USER FRIENDLY TIMER AND VOLTAGE SETTINGS
- AUTO / MANUAL MODE OPERATION
- EASY INSTALLATION AND MAINTENANCE
- DISPLAY MOTOR RUN HISTORY AND RUNNING STATUS

DESCRIPTION:



1. POWER LED.
2. SEQUENCE LED.
3. AUTO LED.
4. DC LED.
5. 16 x 2 LCD DISPLAY.
6. AUTO/MANUAL SWITCH.
7. 2P/3P SWITCH.
8. SET BUTTON.
9. INCREMENT BUTTON.
10. DECREMENT BUTTON.
11. INPUT/OUTPUT CONNECTOR.

MANUAL FUNCTION:

Set auto/ manual switch into manual position and then turn on power supply. Now controller is ready to monitor the power supply condition and sequence led will glow, now use green pushbutton to turn on the motor and red push button to turn off the motor. The Dryrun preventer will turn off the motor when dry amps, overload amps and voltage fluctuation condition.

AUTO FUNCTION:

Set auto/ manual switch into auto position and then turn on power supply. Now controller is ready to monitor the power supply condition and sequence led will glow. In auto function, a cyclic timer, which will allow the user to switch ON or OFF the motor on user's set time. Auto start timer will be enabled only in auto mode, and it is used to turn on the motor automatically when the power is on, based on user set time. The dryrun preventer will turn off the motor when dry amps, overload amps and voltage fluctuation condition.

2P/3P SWITCH FUNCTION:

A 2P/3P switch is used to set 2Phase/3Phase mode or 3Phase mode only function and DC led is used to indicate 2phase power supply. If 2Phase/3Phase mode is enabled the motor will turn on in 2Phase or 3Phase condition. If 3P mode is enabled the motor will turn on only in 3phase condition.

WIRING DIAGRAM:

Fig 1: 3PHASE DOL STARTER CONNECTION DIAGRAM.

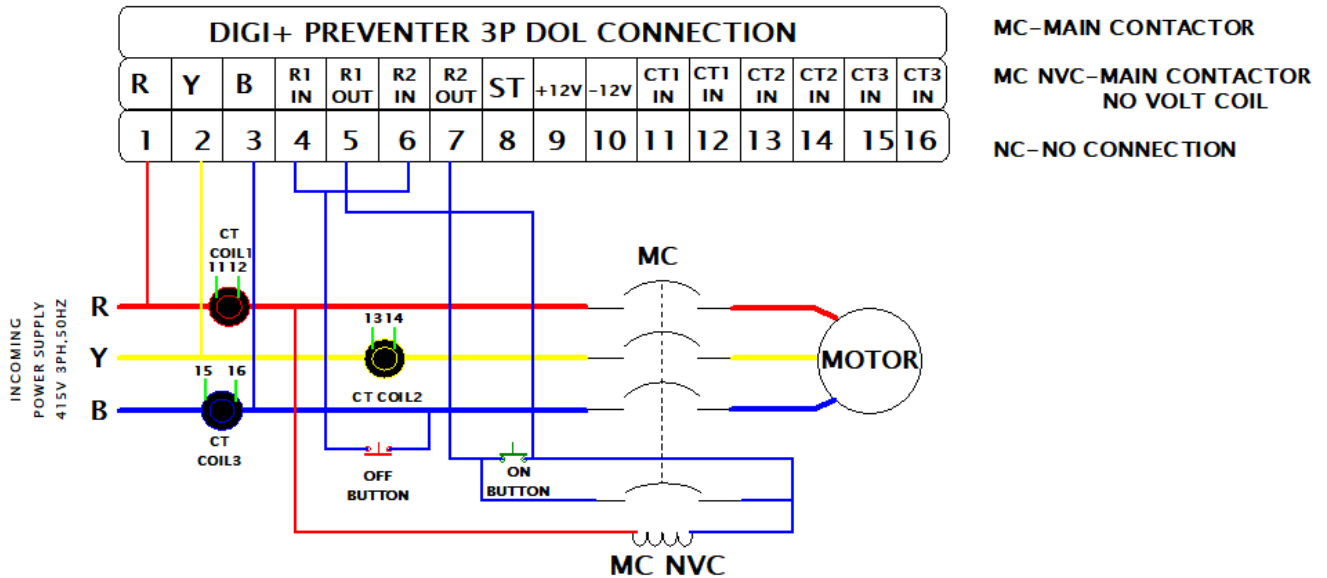
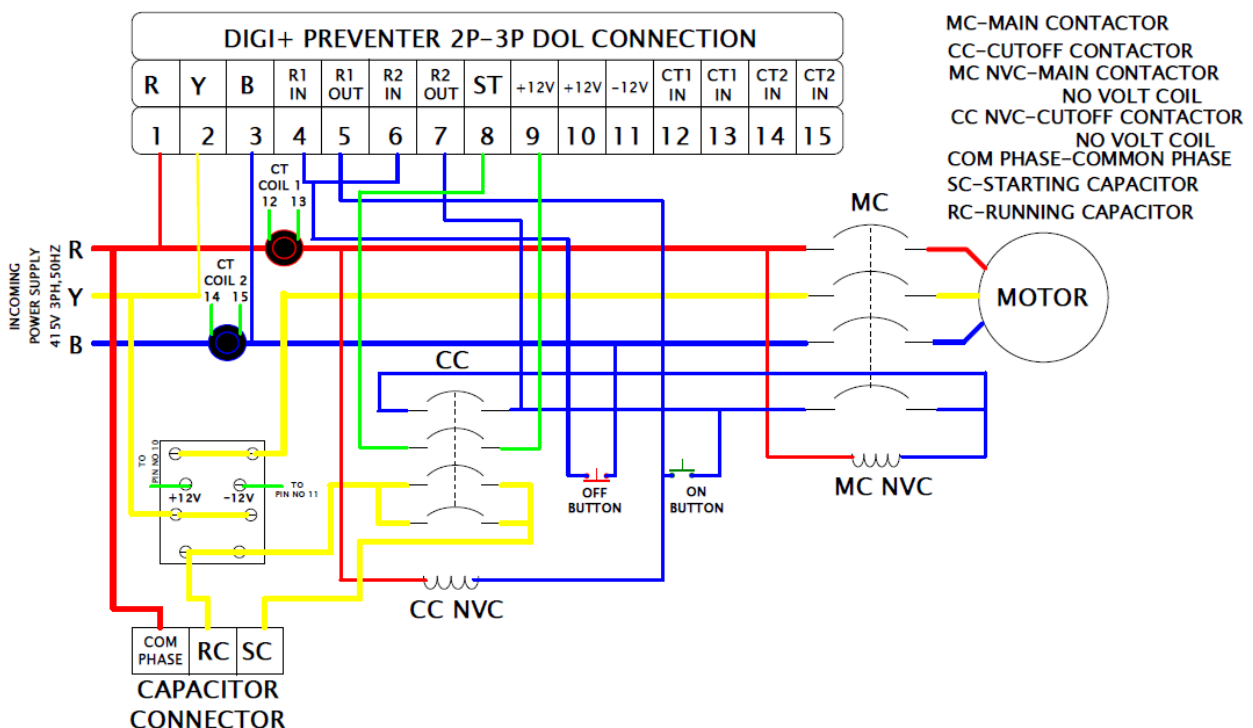


Fig 2: 2PHASE / 3PHASE DOL STARTER CONNECTION DIAGRAM.

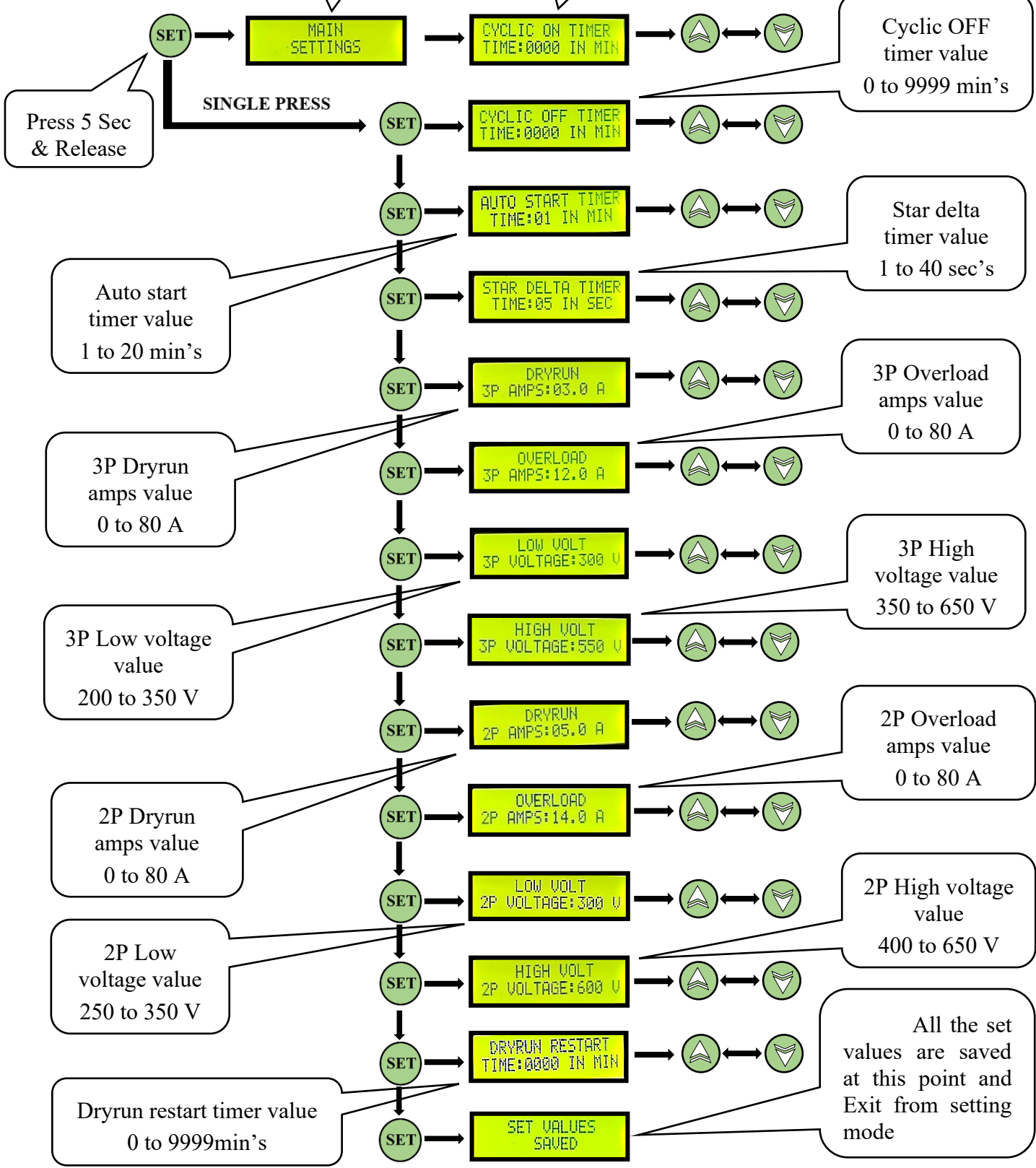


NOTE: ALWAYS DISCONNECT POWER BEFORE INSTALLATION OR MAINTENANCE.

SETTINGS:

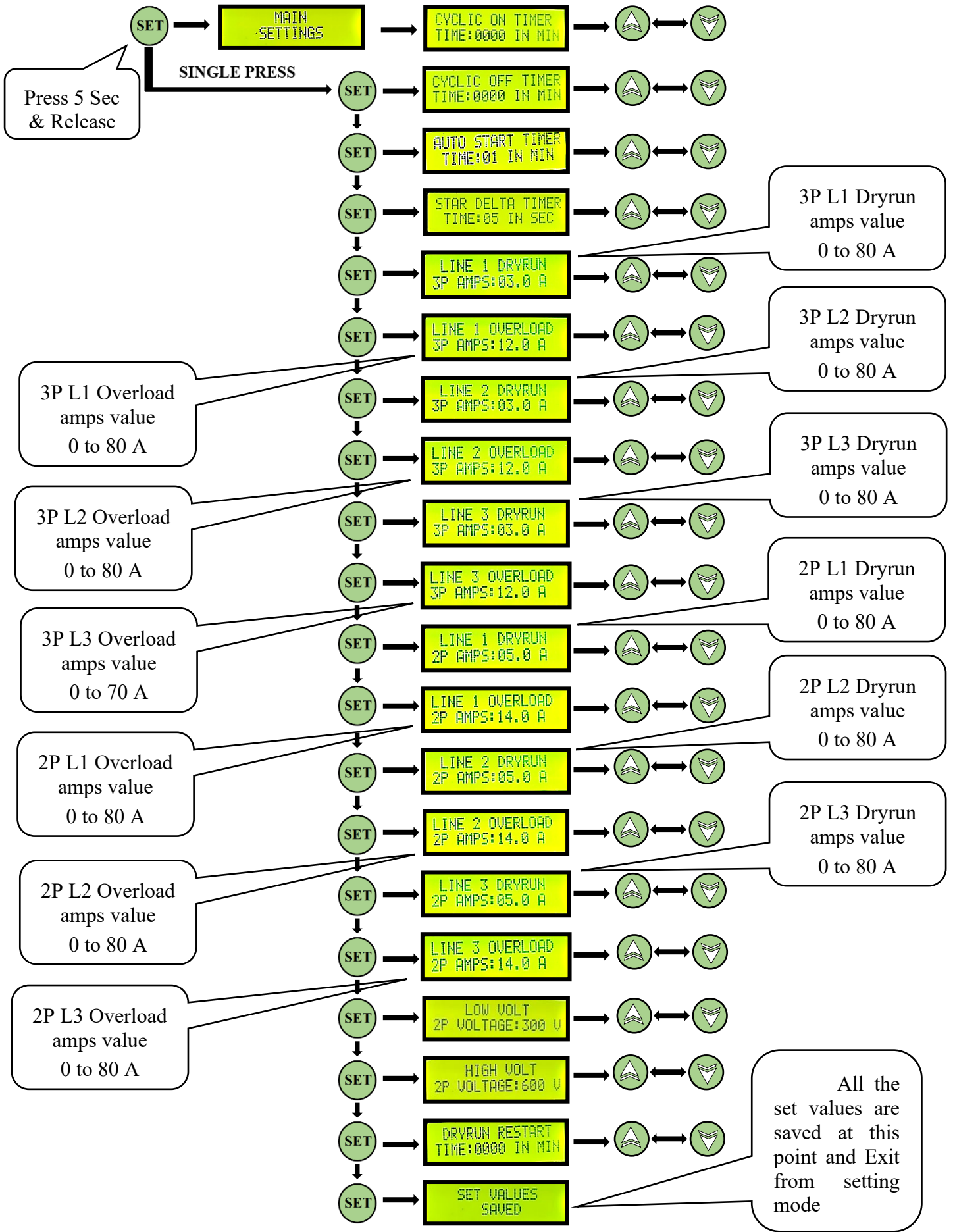
Entering into main setting mode

Cyclic ON timer value
0 to 9999 min's



NOTE: IF TWO PHASE SWITCH IS ON THEN 2PHASE SETTINGS WILL DISPLAY IN SETTINGS MENU (STEP 9 TO STEP 12). ELSE 2PHASE SETTINGS WILL NOT DISPLAY IN SETTINGS MENU (STEP 9 TO STEP 12).

INDIVIDUAL AMPS SETTINGS:



- In default condition, Common amps is enabled. To set individual amps common amps should be disabled in the ENABLE & DISABLE settings.
- Long press INC & DEC button for 5 sec to enter into ENABLE & DISABLE settings, then select the common amps settings as disable.
- All the step 1,2,3,4 are common then step 5 & 6 changed as shown above, then step set 7 & 8 are common then step 9 and step 10 changed as shown above.

AUTO AMPS SETTINGS MODE:

- Long press DEC button while motor on in 3phase mode to set the 3PH DRYRUN value for 80% and 3PH OVERLOAD value for 120% reading value.
- Long press DEC button while motor on in 2phase mode to set the 2PH DRYRUN value for 80% and 2PH OVERLOAD value for 130% reading value.

AUTO SET
3 PHASE CURRENT

AUTO SET
2 PHASE CURRENT

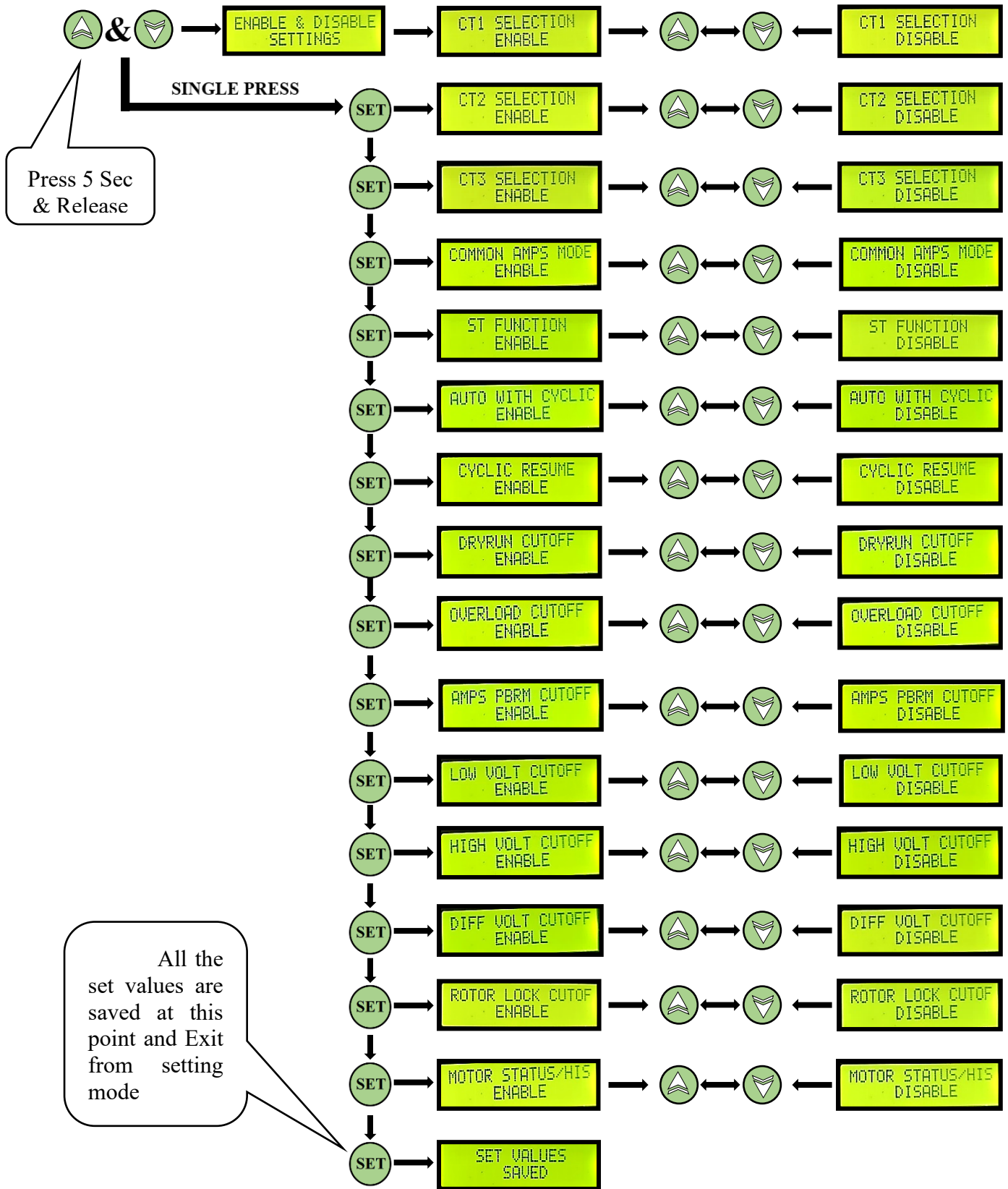
WATER LEVEL CONTROLLER MODE:

- Long Press DEC button while motor off condition to ENABLE the WATER LEVEL OPTION.
- Long Press DEC button while motor off condition to DISABLE the WATER LEVEL OPTION.

WATER LEVEL
ON

WATER LEVEL
OFF

ENABLE & DISABLE SETTINGS:



NOTE: ALL THE PARAMETERS ARE ENABLE IN DEFAULT CONDITION.

FAULT INDICATION AND SOLUTION:

DISPLAY	ABBRIVATION	SOLUTION
DRY LOAD MOTOR OFF	DRYRUN FAULT	1. CHECK WATER LEVEL OF BOREWELL. 2. CHECK SETTINGS.
OVER LOAD MOTOR OFF	OVERLOAD FAULT	1. CHECK MOTOR CONNECTION. 2. ENSURE GATEVALVE IS OPEN.
AMPS PROBLEM MOTOR OFF	AMPS PROBLEM FAULT	1. CHECK CT COIL. 2. CHECK MOTOR WIRING.
LOW VOLTAGE MOTOR OFF	LOW VOLTAGE FAULT	1. CHECK INPUT VOLATGE.
HIGH VOLTAGE MOTOR OFF	HIGH VOLTAGE FAULT	1. CHECK INPUT VOLATGE.
DIFFERENT VOLT B/W THE LINE	DIFFERENT VOLTAGE FAULT	1. CHECK R, Y and B SEQUENCE. 2. INPUT VOLTAGE. 3. PHASE FAILURE.
FLOAT FAULT	FLOAT FAULT	1. CHECK FLOAT SENSOR.
PUMP ERROR	PUMP ERROR FAULT	1. CHECK MOTOR.
ROTOR LOCK MOTOR OFF	ROTOR LOCK FAULT	1.CHECK MOTOR

Thank you for choosing the **DIGI PRO PREVENTER**. This user manual provides comprehensive information to help you operate and maintain your device effectively. If you have any further questions or require technical support, please contact our customer service team.



WARRANTY:

CUSTOMER NAME:

MOBILE NUMBER:

ADDRESS:

.....

SERIAL NO: BATCH NO:

E-MAIL:

PURCHASE DATE:

DEALER DETAILS:

***NOTE:**

WARRANTY NOT APPLICABLE FOR PHYSICAL DAMAGE, WATER DAMAGE, NATURAL DISASTER, HIGH VOLTAGE FROM MAINS AND THIRD PARTY REPAIRS.

----- NOTES -----

MANUFACTURED BY:

MOTO CONTROL SYSTEM

186-190,2nd Floor, Dr. Radha Krishnan Street, Tatabad, Coimbatore, Tamil Nadu 641012.

E-mail: info@motocontrolsystem.com Phone: 0422 4334445

Web: www.motocontrolsystem.com